

BusBar_{Box}

11kV

This 11kV busbar enclosure is designed to safely carry high voltage supplies with extreme current loadings in Zone 1 hazardous areas. Suitable for larger connectors typically, 150mm² or more, the enclosure is capable of connecting three phases plus neutral and up to six conductors per phase.

- Up to 3200A**
- Fault rated 100kA for 1 second
- DTS-01 deluge tested enclosure
- Heavy duty machined hinges with lift off cover pad-lockable cover



Enclosure Ratings

Product Reference*	Width (mm)	Height (mm)	Depth (mm)	Maximum Voltage (kV)	Maximum Current (A)**	Max. Ways	Max No. Conductors per Way	Suits Cable Type
EBBB1A4GPAC	770	675	770	11	3000	4	6	Single core
EBBB2A4GPAC	770	1250	770	11	3000	4	6	Multi core
EBBB3A4GPAC	1000	675	770	11	3000	4	6	Single core
EBBB4A4GPAC	1000	1250	770	11	3000	4	6	Multi core
EBBB5A4GPAC	1250	675	770	11	3000	4	6	Single core
EBBB6A4GPAC	1250	1250	770	11	3000	4	6	Multi core

* Available as Type A = Bottom Entry Only Configuration or Type B = Through Box Configuration

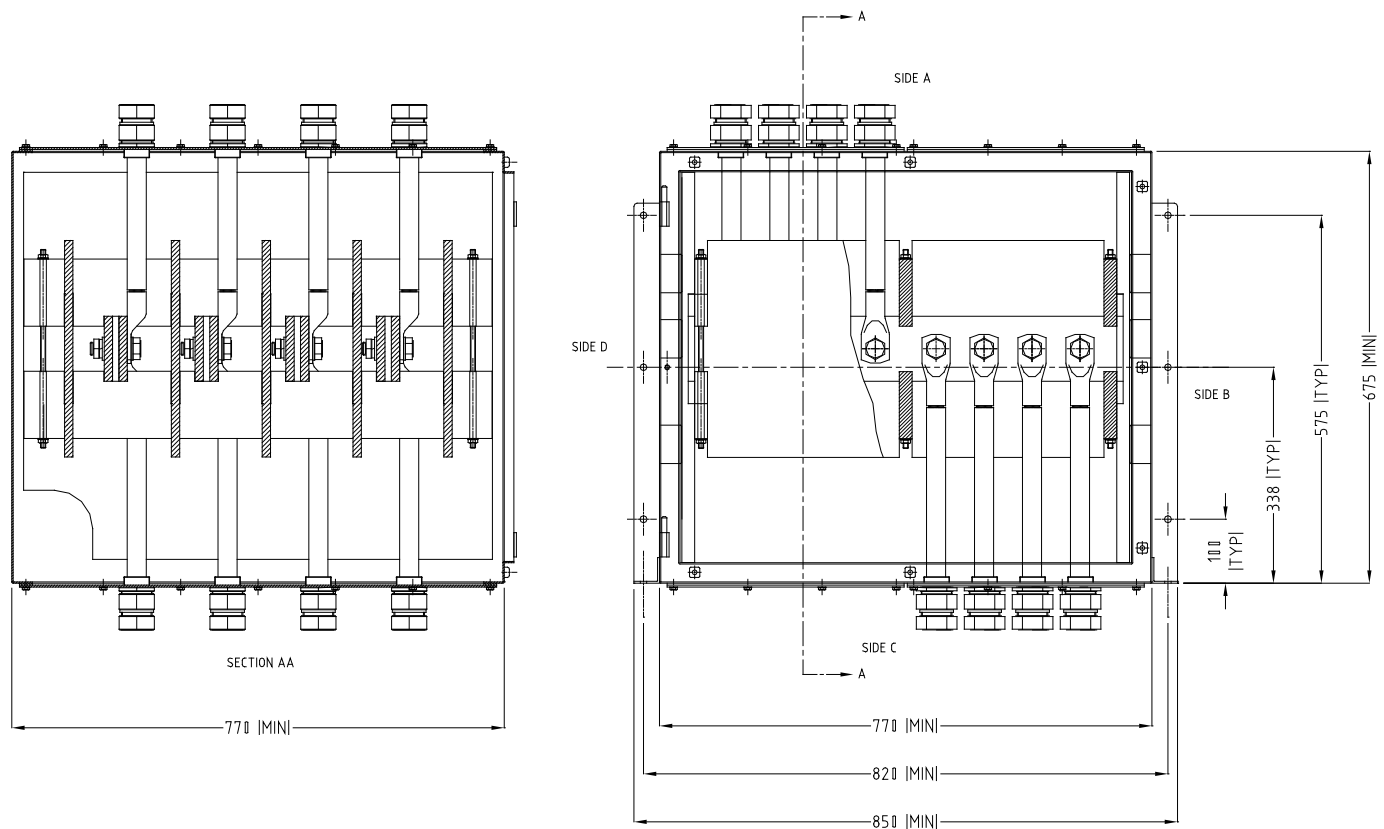
** Maximum line current when connected in a Delta configuration

Standard Specifications

Enclosure Type	High Voltage
Maximum Voltage	11kV
Maximum Current**	Up to 3000A standard, 3200A optional
Ingress Protection	IP66 to EN60529, DTS-01
Impact Resistance	>7Nm
Material	2mm 316L Stainless Steel (EN 1.4404) enclosure with orbital finish, silicone gasket and captive 316 stainless steel fasteners, 5mm 316L (EN 1.4404) Stainless Steel gland plates
Crimp Lugs	16mm ² to 800mm ²
Earthing	Via studs on enclosure, door and gland plates
Mounting	Via heavy duty 3mm thick external angle frames
Certification	
Area Classification	Zone 1 & 21, Gas and Dust / Class 1 Division 2 / InMetro
Type of Protection	Ex e (Increased Safety), Ex tb (Dust Protected)
Apparatus Coding	Ex eb IIC T*** Gb, Ex tb IIIC T***C Db
Ambient Temp Rating	-40°C to +***°C
Certificate Number	ATEX: CML 20ATEX3085X / IECEx: CML 20.0062X

*** - values depend on the application of the equipment, refer to table on the certificate for details.

Dimensions



Options

There are no options for this product. Painted finishes are available upon request.

Accessories

ABDM2010SS	M20 Breather drain
ABDM2510SS	M25 Breather drain
COHTxxxxxx	Anti-condensation heater (wattage and on/off range to be advised)
FBM16EEA4CERT	M16 Eye bolt Stainless Steel A4 DIN580