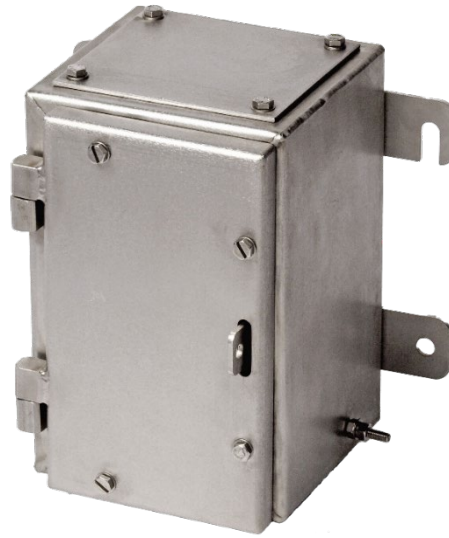


# SX0 Stainless Steel Enclosures

IP66

The SX is a highly durable stainless steel enclosure designed for use in the most demanding and hazardous environments.

- Manufactured from marine grade 316L stainless steel
- Ingress protection to IP66
- Option for IP67/68
- High Level of Impact (IK10)
- High ambient temperature range



## Enclosure Ratings

Product Reference	Width (mm)			Height (mm)		Depth (mm)	Weight (kg)
	X	X (H)	X (M)	Y	Y (M)	Z	
ESSX0140	152	232	88	229	165	140	3.2
ESSX0200	152	232	88	229	165	200	4.0

## Standard Specifications

Material	Marine grade 316L (1.404) stainless steel with silicone gasket and stainless steel fixings		
Material Thickness	Enclosure/Door: 2mm    Gland Plates: 3mm		
Ingress Protection	IP66 (as standard, IP67/68 & Type 4X option available)		
Impact Resistance	IK10		
Ambient Temp Rating	Hazardous Area: -50°C to +175°C    Non-Hazardous: -60°C to +200°C		
Earthing	Earth Stud fitted to Door and Gland Plates		
Terminal Quantity	AKZ 1.5	AKZ 2.5	AKZ 4
	20	20	18
Certification	Type of Protection	Equipment Coding	
	Ex eb (Increased Safety)	Ex eb IIB/IIC Gb	
	Ex tb (Dust Protected)	Ex tb IIIC Gb	
	Ex ia/ib (Intrinsic Safety)	Ex ia IIB/IIC Ga, Ex ib IIB/IIC Gb	
	Ex ta (Dust Ignition)	Ex ta IIC Da	
	Ex op is/pr (Optical Radiation)	Ex op is IIB/IIC, Ex op pr IIB/IIC T4 Gb	
Certificate Numbers	IECEX	IECEX CML 14.0047X	
	ATEX	CML 14ATEX3123X	
	UKEX	CML 21UKEX3109X	
	ECAS Ex (UAE)	24-06-23146/Q24-06-049342/NB0007	
	InMetro (Brazil)	NCC 24.0069 X	
	NEC Class 1 Zone 1	E115516	
	NEC Class 1 Division 2	E115516	
	TRCU (Eurasian Customs Union)	RU C-GB.HA65.B.01696/23	

## Gland Entry Matrix \*

Size	Side A – C		Side B – D	
	140	200	140	200
M16	4	9	8	16
M20	2	6	6	9
M25	1	4	3	6
M32	1	2	2	4
M40	1	1	2	2

\*Using standard gland clearances.

### Drilling Envelope Dimensions

Size	Side A – C		Side B – D	
	140	200	140	200
Width (mm)	87	87	144	144
Height (mm)	75	135	75	135

\*With gland plate fitted.

## Accessories

Gland Plates (available on all sides)
Rear entries
Electro-polished external surfaces
Epoxy powder coated, smooth finish (RAL colour may be specified)
Anti-condensation heater
Component Mounting Plate
Breather Drain
Internal earthing bar

## Dimensions

