

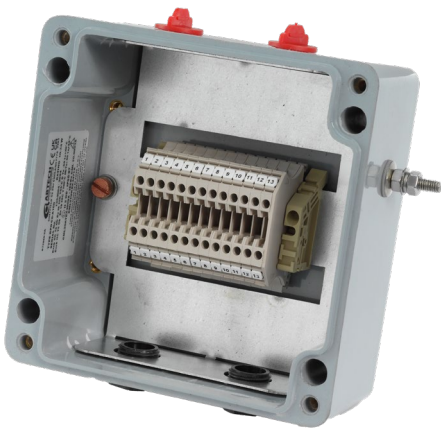
BPGA-160

Pre-Assembled GRP

IP66/67

The BPGA is a pre-built, fully Ex certified and ready to install junction box. Ideal for lighting, small power and routine maintenance applications.

- Terminals, Earthing & Links included
- Pre-drilled entries with certified blanking plugs for multiple installation arrangements



Enclosure Information

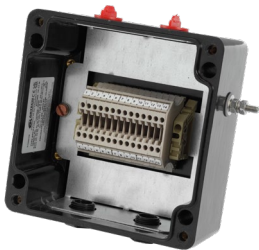
Product Reference	Width (mm)	Height (mm)	Depth (mm)	Weight (kg)
BPG8A-160	160	160	90	1.74

Standard Specifications

Enclosure Material	Glass Reinforced Polyester (Grey – RAL7001)	
Ingress Protection	IP66/67 to EN60529	
Impact Resistance	IK08, >7Nm	
Ambient Temperature Range	-50°C to +40°C T6 -50°C to +55°C T5	
Terminals	13 x WDU 2.5 (linked in pairs)	
Entries	Side A: M20 x 2 (fitted with certified blanking plugs) Side C: M20 x 2 (fitted with travel plugs)	
Earthing	Zintec Earth Plate & External Stainless Steel Earth Stud	
Certification	Type of Protection	Equipment Coding
	Ex eb (Increased Safety)	Ex eb IIC T Gb
	Ex ta (Dust Ignition)	Ex ta IIIC T°C Da
Certificate Numbers	ATEX	CML 20ATEX3009X
	IECEX	IECEX CML 20.0003X
	UKEX	CML 21UKEX3471X

Options

BPGCA-125 (Anti-static Version)		
Enclosure Material	Carbon Loaded Glass Reinforced Polyester (Black- RAL9001)	
Ingress Protection	IP66/67 to EN60529	
Impact Resistance	IK09	
Ambient Temperature Range	-50°C to +40°C T6 -50°C to +55°C T5	



**Internal components are the same as BPGA version*

External mounting feet in Stainless Steel (set of 4)

Dimensions

